



WOLTMAN IMPULSSIANTURIT  
WOLTMAN IMPULSGIVARE  
WOLTMAN IMPULSE SENSORS

Woltman WPH-N / WS-N / WI-N



Tuotekoodi	DN50 - DN125	DN150 - DN300	DN400 - DN500	
Produktkod	DN50 - DN125	DN150 - DN300	DN400 - DN500	
Article code	DN50 - DN125	DN150 - DN300	DN400 - DN500	
WREED-1	4488512	100L	1 m <sup>3</sup>	10 m <sup>3</sup>

### OMINAISUUDET EGENSKAPER CHARACTERISTICS

#### REED - anturi

- Potentiaalivapaa tuntoelin, jossa REED kytkin toimii kytkevänä elementtinä
- Soveltuu matalille pulssitaajuuksille

#### REED - givare

- Potential fri givare, med REED kontakt som momentbrytare
- För låga pulsfrekvenser

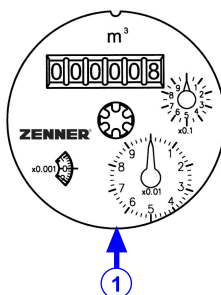
#### REED - sensor

- Potential free electrical sensor with REED contact as a switching element
- For low-resolution pulse frequency

### ASENNUS MONTAGE INSTALLATION

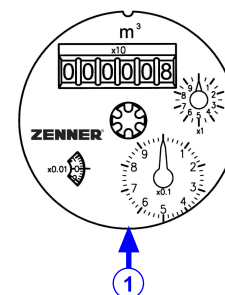
#### DN50 - DN125

- ①  
REED pos 01  
1 imp / 100 L

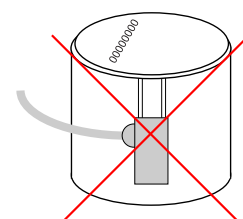
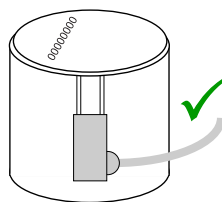


#### DN150 - DN300

- ①  
REED pos 01  
1 imp / 1 m<sup>3</sup>

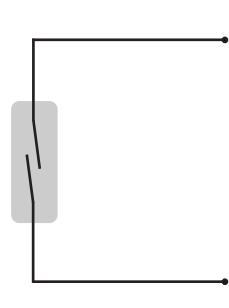


Anturin asennus / Montage av givaren / Sensor installation



### TEKNISET TIEDOT TEKNISKA DATA TECHNICAL DATA

#### REED



Ruskea  
Brun  
Brown

Valkoinen  
Vit  
White

Kaapeli Kabel Cable	2 x 0,25 mm <sup>2</sup> L = 2 m
Anturityyppi Givare typ Sensor type	REED
Maksimikuormitus Maximum belastning Maximum load	10 W [ 200 V, 0.5 A, AC/DC ]